

Light up the future via quality and honesty

锦程达电路集团 JID-PCB GROUP

海外市场部

Oversea Sales Marketing:

Room 905 – 908, Golden Business Centre, Tongfuyu Industrial Zone, Shajing,
Bao'an District, Shenzhen City, Guangdong Province, 518000, P.R. China

Tel: (0086)755-3652 8006

Fax: (0086)755-6167 3681

Contact: Mr. Raul

Email: raul@jid-pcbgroup.com

联系工厂

Factory Contact:

No.168,A-26 Block, Tongfuyu Industrial area, Shajing Town,
Bao'an District, Shenzhen City, Guangdong Province, 518000, P.R. China

Tel: (0086)755-2721 6635

Fax: (0086)755-2727 3609

Contact: Miss Chang

Email: info@jid-pcbgroup.com

陕西办事处

Shanxi Office :

Room 0919, Dongyin Mansion, NO.3, Mid. Renmin Rd.
Xianyang City, Shaanxi Province, 712000, P.R. China

Tel: (0086)29-3896 9077

Fax: (0086)29-3896 9078

Contact : Mr. Ma

Email: info@jid-pcbgroup.com

成都办事处

Chengdu Office :

Unit 10#, Wanda Plaza, Er'huan Road East,
Chengdu City, Sichuan Province, 610000, P.R. China

Tel: (0086)28- 8515 6163 Fax: (0086)28- 8517 4791

Contact : Miss Tang

Email: info@jid-pcbgroup.com

PCB专业制造商



Professional PCB Manufacturer



持续改进 追求卓越
Keep improving Strive the best

我们将秉承优势, 不断创新, 持续改进, 精益求精
与客户和商业伙伴一起共同成长
We will be together with our partners and customers
keep improving strive the best
based on going innovation and optimization

公司简介

Company Profile

把握时代 继往开来

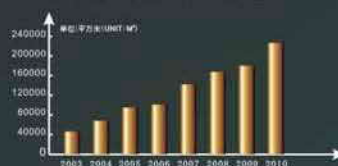
公司成立于1997年，工厂位于深圳市宝安区沙井镇沙井同富裕工业区，厂房面积18000平方米，并不断引进德国、日本、台湾等地区先进的生产设备及技术，致力于生产及开发高精度、高品质的双面到十二层硬性优质线路板。

锦程达电路公司将一如既往秉承“信誉至上，质量第一”的企业理念，严格按照ISO9001/ISO14001管理体系运营，满足客户最大需求为我们的努力方向，不断拓展业务领域，提升业务层次，在行业中成长壮大。我们公司全体员工愿意在今后的岁月里精诚协作，以最优质的品质、最快捷的服务速度为客户提供一流的服务，回报各位新老客户对我们的信任和大力支持。



Keep Step With Time And Make Future

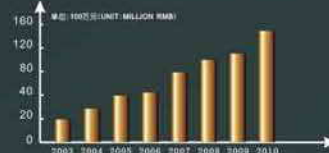
年产量示意图 Turnout per year



JID-PCB Group, established in Year 1997, is a hi-tech enterprise that specializes in high precision double-side, multilayer circuit board, blind/buried printed circuits board production. We have a plant of 18000 sq. M. and more than 700 staffs. We have 2 professional production plants to make Aluminum PCB and FR-4 PCB.

The Group constantly introduces advanced equipment and technology and devotes to the manufacture and development of 2 – 12 rigid printed circuit boards with high precision, quality and reliability, which meets the standards of UL, IPC, IEC, RoHs. Products cover the industries such as telecommunication, medical treatment equipment and computer related area and so on.

年销售额示意图 Turnover per year



As usual, we will keep the enterprise philosophy of Credits Uppermost, Quality First and operate strictly according to ISO9001:2000 quality system. To let our customers satisfied is our sincerely goal. We will continuously explore the business areas, upgrade business level and expand ourselves. All our staffs will be together and provide customers with the best quality and the fastest service to return the great support of both our old and new customers.

Warm welcome to visit us any time.



快捷服务

Quick turn service

快速反应 优质服务

Faster Respond Excellent Services

Quick response, JIDPCB will reply Customer's any enquiry with in 3 hours

三小时快速反应

24hours technique Supportment

24小时不间断技术支持

24 hours english engineering questions confirmation by E-mail

24小时标准英文工程问题确认

More than 30 type of pcb can be worked out every day

每天处理30个品种

24hours engineering gerber files treatment

24小时工程文件处理



以先进的生产设备为基础,以优秀的团队合作为主导,以完整的管理体系为依据,以优质的产品为目标,不断创新和提高,优化生产流程,节约生产成本,缩短生产周期,为客户提供优质快捷的产品,为客户创造价值。



make out the best project fit for production customized, which will improve the reliability of our product and shorten the product research and development period. About 25 engineers with rich experience. Working by two shifts, are treating the engineer files 24 hours, providing our buyer technique support. We research different kinds of CAM software, which will shorten the engineering inquiry and working time.

可接受文件Acceptable file:

Gerber file (RS-274-X or RS-274-D with aperture list and drill files), Protel, PADS, PowerPCB, AutoCAD.

处理软件Software: CAM:

Genesis, CAM350, GC-CAM, UCAM.



精湛工艺

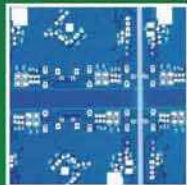
Production Capabilities

追求完美 永不止步
Strive For Perfect Without Ending

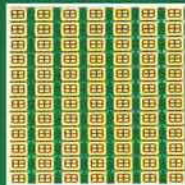
我们公司专业生产双面及多层印制线路板,层数最高可加工12层,表面处理及特殊材质板包括:喷锡板、电金板、沉金板、沉锡板、沉银板、碳油板、抗氧化板、金手指板、蓝胶板、陶瓷板、铝基板、高TG板、无卤素板。
JID-PCB is a high-tech company specializes in the manufacturing of high-precision, high-density and high-reliability PCB from 1 to 12 layers. Types of surface finishing is including:

- HAL (Lead free)
- Immersion Ni/Au, or Tin
- Gold-finger
- Immersion Ag/Kapton tape
- 4 OZ copper PCB
- High-TG PCB
- Ni/Au plating/
- Peters Peelable mask
- Carbon ink blind/buried via
- Aluminium based PCB
- Ceramics PCB
- Impedance required PCB

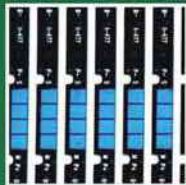
沉银板
Immersion silver



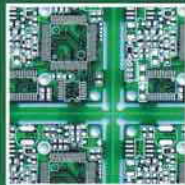
沉金板
Immersion Gold



蓝胶板
Peters Peelable mask



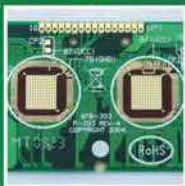
无铅喷锡板
HAL



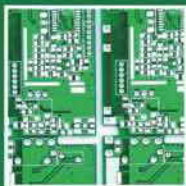
抗氧化板
O. S. P



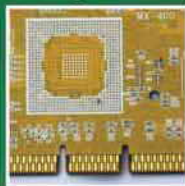
电金板
Gold Plating



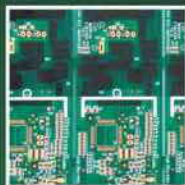
沉锡板
Immersion Tin



金手指板
Gold Finger



碳油板
Carbon INK



产品类型分布图
products distribution



生益



建滔 KB



南亚



板材
Base material

太阳



广信

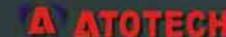


红大



油墨
Solder mask

安美特



药水
Chemical solution

金洲



钻咀
Drill bit

Production Capabilities

(ITEM)项目	技术指标(Technical Data)
(Layers)层数	1-12层(1-12layers)
(Max. Board Size)最大加工面积	457mm × 610mm (18" × 24")
(Min. Board Thickness)最小板厚	2/4/6 Layers (0.20/0.40/0.80mm 8/16/32mil)
(Min. Board Thickness)最小板厚	8/10Layers (1.00/1.20mm 40/48mil)
(Min. Line Width)最小线宽	0.10mm (4mil)
(Min. Line Space)最小线距	0.10mm (4mil)
(Min. Hole Size)最小孔径	0.20mm (8mil)
(PTH Wall Thickness)孔壁铜厚	0.025mm (1.0mil)
(PTH Dia. Tolerance)金属化孔径公差	±0.05mm (±2mil)
(NPTH Dia. Tolerance)非金属化孔径公差	±0.025mm (±1mil)
(Hole Position Deviation)孔位公差	±0.05mm (±2mil)
(Outline Tolerance)外形尺寸公差	±0.10mm (±4mil)
(S/M Pitch)最小焊桥	0.10mm (4mil)
(Insulation Resistance)绝缘电阻	1×10 ¹¹ 欧姆(常态) / 1×10 ¹⁰ ohm (Normal)
(Aspect Ratio)板厚孔径比	10:1
(Thermal Shock)热冲击	288℃ (10秒3次) / (3×10sech288℃)
(Warp And Twist)扭曲与弯曲	≥ 0.7%
(Electric Strength)抗电强度	> 1.3kv/mm
(Peel Strength)抗剥离强度	1.4N/mm
(Solder Mask Abrasion)阻焊剥硬度	≥ 6H
(Flammability)阻燃性	94V-0
(Impedance Control)阻抗控制	±5%

通常产品交货周期(Lead Times)

样板(Sample):

- 单双面(DS):3-4天(3-4working days)
- 四层(4L):4-5天(4-5working days)
- 六层(6L):6-7天(6-7working days)
- 八层及以上(Above 8L):10-12天(10-12working days)

批量(Mass production):

- 单双面(DS):4-5天(4-5working days)
- 四层(4L):5-6天(5-6working days)
- 六层(6L):7-8天(7-8working days)
- 八层及以上(Above 8L):12-15天(12-15working days)

先进设备

Advanced Equipment

先进设备 技术领先

High Technology With Advanced Equipment

工欲善其事,必先利其器.为了给客户提供更优质快捷的产品服务,公司不断引进国内外各种先进生产设备及仪器.

To offer faster and better products and service we continually import advanced equipment oversea.



1. 德国SCHMOOL钻孔机 CNC Drilling
2. 自动图形电镀线 Auto plated Ni/Au line
3. 自动光学检查AOI Automated Optical Inspection
4. 压合 Lamination Dept.
5. 自动沉铜线 Auto Chemical Cu line
6. 磨板机 CNCmilling
7. 曝光机 Exposer
8. 显影机 Development line
9. 蚀刻机 Acidic Etching line
10. 自动丝印机 Auto silk-screening printer
11. 锣机 CNC Routing
12. 洗板机 Cleaning Machine
13. 飞针测试 Flying probe tester
14. 测试机 Open and Short Testing
15. 二次元 2D image measurement instrument

流程展示

Production Process

精湛工艺

Perfect Craftsmanship



资料处理

市场部在收到客户订单, 经过合同评审及APQP会议后, 将订单和相关资料转到工程部, 由工程师处理成公司文件(MI)下达生产指示.

MI preparation

The engineers are transferring the Gerber files from the original design files to Productive files.



钻孔

将开好的板固定在钻机上, 调出工程部处理好的钻孔资料, 按设计要求在覆铜板上钻出要求大小不等的孔.

Drilling

Drill the needed holes on the prepared panels with drilling data from engineering Gerber files.



磨板

对覆铜板表面处理, 去除污渍, 氧化层等.

Milling

Clean the dust and oxide on the board surface.



沉铜

钻好孔的板, 经过表面处理(磨板), 进行孔金属化.

PTH process

Immerse the drilled boards into the container with solution of copper, so that the hole will be covered with copper.



曝光

将设计好的图形按孔的结构固定覆铜板表面, 用照像的方式使感光膜曝光形成预定的图形.

Exposure and Development

The film with circuit on it will be covered on the board which is with dry or wet film, and will be sent to



显影

将曝光后的线路板经过显影机, 冲洗掉未曝光的部位, 留下设计好的图形.

Development of solder mask

Keep the mask used to resist the solder while cut the rest of the solder mask to exposed functional circuits.



图形电镀

加厚铜, 为满足设计要求, 把线铜和孔铜加厚到预定范围, 如健全工序则一步完成, 后序不在对其表面处理.

Partial plating

To meet the requirement of the thickness of the surface board and hole copper thickness, to increase the thickness by plating.



蚀刻

去除导线间的多余铜皮, 保留设计好的导线及地线铜皮.

Etching

Etch the copper which is unnecessary, while remain the copper which formed circuits.



阻焊丝印

在线路板的表面涂覆一层液态感光树脂.

Solder mask

Cover a layer of solder mask to resist the solder when doing any chemical process.

锣边

把做好的线路板固定在锣机上, 调出工程设计好的文件加工成预定的尺寸.

Routing

Route a whole board into SETs or PCSs as per requirement

丝印字符

将客户根据电路图原理设计的电器符号丝印在预定部位.

Silk screen

Print the legend and logo required on the solder mask layer

飞针测试

等同于E-T测试, 结合订单数量和客户要求, 采用不同的测试方式.

Flying probe testing

A way like E-Testing to test OPEN and SHORT

E-T (测试)

对线路板的开、短路及阻抗测试, 保证出货的产品100%的好板.

E-Testing

Test the OPEN and SHORT functional necessary, and make sure the OK boards before shipment

真空包装 Vacuum Package



MODERNIZATION

品质管理

Quality Management

卓越品质 体系保证 High-quality Management Assurance

产品质量就是企业的生命, 我们公司一直秉承客户至上, 质量第一的产品质量方针, 为广大客户提供快捷优质的产品服务.

Quality is the life of the enterprise, we will constantly offer the faster and better service for our customers by holding the faith of "customer first, quality first".



RoHS compliance

UL认证certification



ISO9001:2000



ISO14001:2004



Target 目标 交期达成率Rate of delivery: ≥95%
客诉率Rate of claim: ≤5%
成品合格率The passing Rate: ≥99.9%

Mission 使命 在电路板市场提供一流产品和服务, 使我们的用户得到超值的享受, 使我们的员工和合作伙伴分享成功的果实, 使我们的股东不断地得到良好的投资回报
Supply the top class products and services, so that our customers can enjoy the overflow satisfaction, our staff and partners can share the achievement of the success.



REACH/PFOS



Committee of Shenzhen Electronic C of C



High-tech certification



企业全球化的通行证

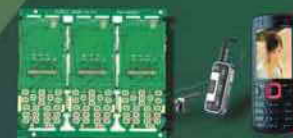
产品应用

Production Show

应用广阔 精雕细琢 Extensive Application

面对不断变化的市场需要,公司产品不断创新,以多元化、全方位的产品服务社会.产品分布消费电子、交通运输、IT通讯、医疗设备、军工用品等多个领域.

Our products used for consumptive electronics, Transportation, Telecommunication, Medical equipmnet and auto area.



铝基板

Aluminum PCB (MCPCB)

节能科技 点亮中国

Conservation Technology, Lighting China



应用范围 Application

用途:功率混合Power Hybrid IC (HIC)

1. 大功率LED路灯灯、庭院灯、景观灯、射灯、灯饰、照明日光灯等。
High-power LED lights: street lamp, courtyard lamp, light view lamp, furniture lights, decorative lighting, fluorescent lamps and so on.
2. 音频设备: 输入、输出放大器, 平衡放大器, 音频放大器, 前置放大器, 功率放大器。
Audio devices: input, out amplifiers, balanced amplifiers, audio amplifiers, preamplifiers, power amplifiers.
3. 电源设备: 开关调节器, DC/AC转换器, SW调整器等。
Power Supply: Switch Adjuster, DC / AC converter, SW adjuster etc.
4. 通讯电子设备: 高频增幅器, 滤波器, 发报电路。
Communications and electronics equipment: high-frequency amplifier, filters, telegraph circuit.
5. 办公自动化设备: 电动机驱动器等。
Office automation equipment: electromotor drives.
6. 汽车: 电子调节器, 点火器, 电源控制器等。
Automobile: Electronic adjuster, ignition, power supply controllers.
7. 计算机: CPU板, 软盘驱动器, 电源装置等。
Computer: CPU board, floppy drives, power supply devices.
8. 功率模块: 换流器, 固体继电器, 整流电桥等。
Power Modules: inverters, solid state relays, commute electric bridges.

国内外各种铝基覆铜板主要性能技术指标对比表 Technical Specification of copper-based CCL

性能指标 Performance index (Measure value)	产品名称 Product	美国贝格斯板材 US Bergquist Substrate	日本NRK板材 Japan NRK Substrate	台湾普通高导热板材 Taiwan Plain Thermo Conductive Substrate	国产板材 Domestic Substrate
剥离强度(单位:N/mm) Peeling Strength(N/mm)		3	3	2.2	1.2
绝缘电阻(单位:欧姆) Insulation Resistance(ohm)		>100*10G	>10*10G	>10*10G	>1*10G
击穿电压(单位:伏特) Breakdown Voltage(V)		6K	5.5K	>2.5K	>2K
耐浸焊性(单位:℃/分钟) Soakable Soldering(℃/min)		300℃时1分钟不起泡, 不分层 300℃, 1min, no bubble, no delamination	300℃时1分钟不起泡, 不分层 300℃, 1min, no bubble, no delamination	288℃时1分钟不起泡, 不分层 288℃, 1min, no bubble, no delamination	280℃时1分钟不起泡, 不分层 280℃, 1min, no bubble, no delamination
导热系数(导热率)(单位:W/m·k) Thermal Conductivity(W/m·k)		>2	>2	>1.5	>0.8
热阻(单位:℃/W) Thermal Resistance(℃/W)		<0.43	<0.43	<0.8	<1.2
可燃性 Combustibility		94v0	94v0	94v0	94v0
介电常数(单位:1MHz) Dielectric Constant(1MHz)		6	6	5	4
介电损耗角(正切) Dielectric Loss Angle(tangent)		0.02	0.02	0.02	0.03

制程能力 Production Capabilities

材料型号	国产铝材/进口铝材	孔定位偏差	±0.076mm
表面处理	喷锡/化学金/OSP/沉锡	最小冲孔直径	≤1.0mm(1.0mm)
层数	单面铝基板/双面铝基板/四层铝基板		1.2-3.0mm(1.5mm)
最大尺寸	800mm*480mm	最小冲孔槽规格	板厚≤1.0mm(0.8mm*0.8mm)
最小尺寸	5mm*5mm		板厚1.2-3.0mm(1.0*1.0mm)
线宽线距	0.10mm	丝印线路偏差	±0.076mm
板翘曲度	≤0.5%(厚度:1.6mm, 尺寸大小:300mm*300mm)	成型尺寸公差范围	CNC锣外形:±0.1mm 模冲外形:±0.15mm
加工厚度	0.80-4.5mm	最小孔径	0.8mm
铜箔厚度	35um 70um 105um 140um	镀层厚	镀金: Ni 2.5-5um Au0.05-0.1um 0.025-0.075um 沉金: Ni 5-8um Au0.08-0.1um
成型尺寸公差	±0.15mm		喷锡 3-30um 4-30um
V-CUT对位精度	±0.01mm	V-CUT角度偏差	±5°
加工能力	6000m ²	V-CUT板材厚度范围差	0.8mm-3.2mm
孔内铜厚	20-25um	最小元件标记字体	0.15mm
焊盘最小开圆	0.1mm		

人力资源

Human Resources

人才策略

Human Tactics

我们公司的生存和发展需要高素质、高标准的员工团队,其人才理念体现了公司公平合理、尊重人才、激励员工的一贯政策,公司不断进行各种技能培训,力求让每一位员工得到提升和发展。公司的成功离不开您的参与和投入,我们相信您会为了公司的发展竭尽全力地工作,双方之间进行紧密而有效地合作,同时这也将帮助您与您的上级、下级及同事之间建立一种密切而融洽的关系,这种合作精神和相互信任的关系,将有利于您在工作中充分施展才能。



生日聚会 Birthday Party

以人为本 传承智慧

Respected Person, Bestowal Intelligence

以雷厉风行的专业风范,精干高效,追求卓越。
Fast action, professional manner, crack efficiency, seeking excellence.



消防演练 Fire protection



拔河比赛 Game

The development of JID-PCB group requires high quality and high standard work team. The employment policy indicates the value of human resource here, and it will show the justices, respect, inspiration of the company. JID is always training every member, the success of the company links to the participating and investment of everyone in the company. In the other hand, JID also believes that all of the staffs will exert their full strength to achieve the target, the close corporation between each other will help to build a harmonious relationship among colleagues, the reliable and trusty relationship will be beneficial for everyone.



旅游 Tour



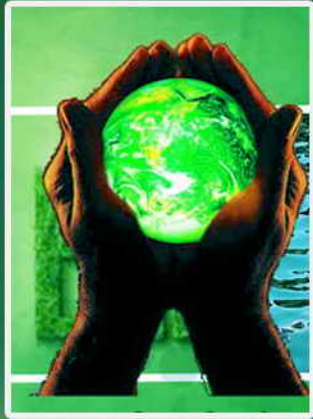
培训 Training

周年 Annual Celebration



环境保护

Environment Protection



保护环境 持续发展

Environment Protection,
Constant Development

环境是人类赖以生存和发展的前提,保护环境是每个公民和社会团体应尽的义务,我们将严格按照国际环境保护组织发布的ISO14001标准,最大限度地降低对环境的影响,为生态平衡和人类可持续发展做出积极的贡献。

Good environment is the base condition of human being. Protecting the environment is the obligation of each citizen. JID-PCB Group will strictly control the affects to the environmnet as per ISO14001:2004 for making a better life for next generation.



空气净化(Air Cleaner)

深圳市环保优质工程

Excellent project of environment protection in Shenzhen

为响应市环保政策关于降耗、节能及环保设施升级的倡导,公司投资300万元于2008年10月对原有的污水处理系统进行了升级和改造。2009年4月被深圳市环保局授予“深圳市环保优质工程”称号。

We are awarded the excellent Environment protection project of Shenzhen in Oct. 2008, which was invested RMB 3, 000, 000.

